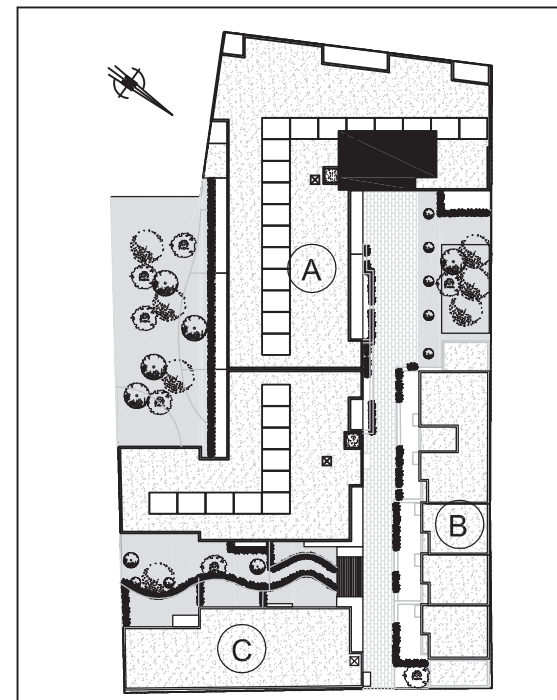
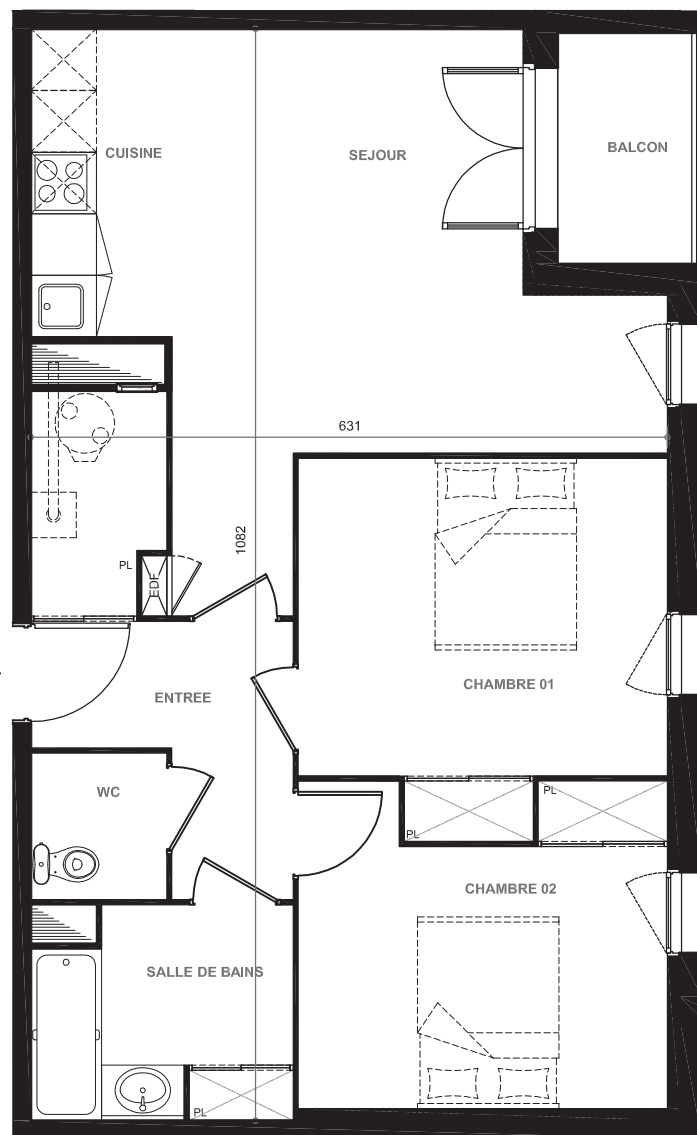
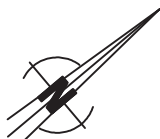


Les Terrasses D'Albret

120 - 126 Rue de Bègles - 33000 BORDEAUX



BATIMENT A

ETAGE 2

3 pièces - N° 27

Parking N° 70

SURFACE TOTALE	64.82 m²
- ENTREE + PLACARD	7.94 m ²
- SEJOUR + CUISINE	23.09 m ²
- CHAMBRE 01 + PLACARD	12.35 m ²
- CHAMBRE 02 + PLACARD	10.98 m ²
- SALLE DE BAINS	5.23 m ²
- WC	1.96 m ²

TOTALE HABITABLE	61.55 m²
-------------------------	----------------------------

BALCON	3.27 m²
---------------	---------------------------