



— Les Jardins d'—  
**Audrey**

150 RUE DE LA CROIX BLANCHE  
 85180 LE CHÂTEAU D'OLONNE

**SEVERINI**  
**PIERRES & LOISIRS**

www.severini.com

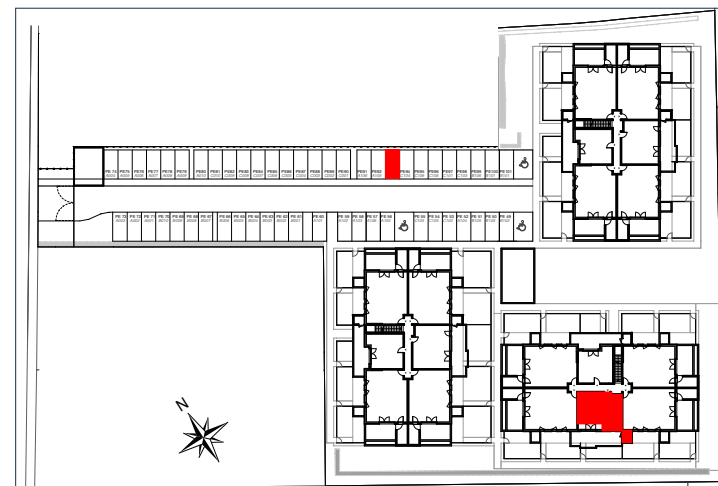
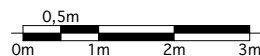
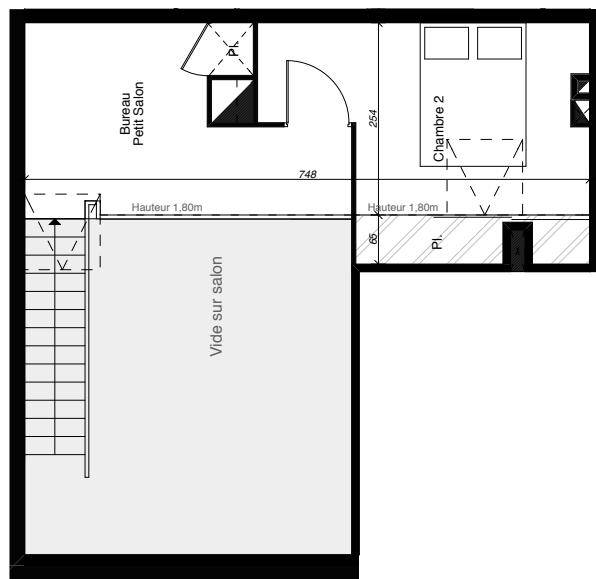
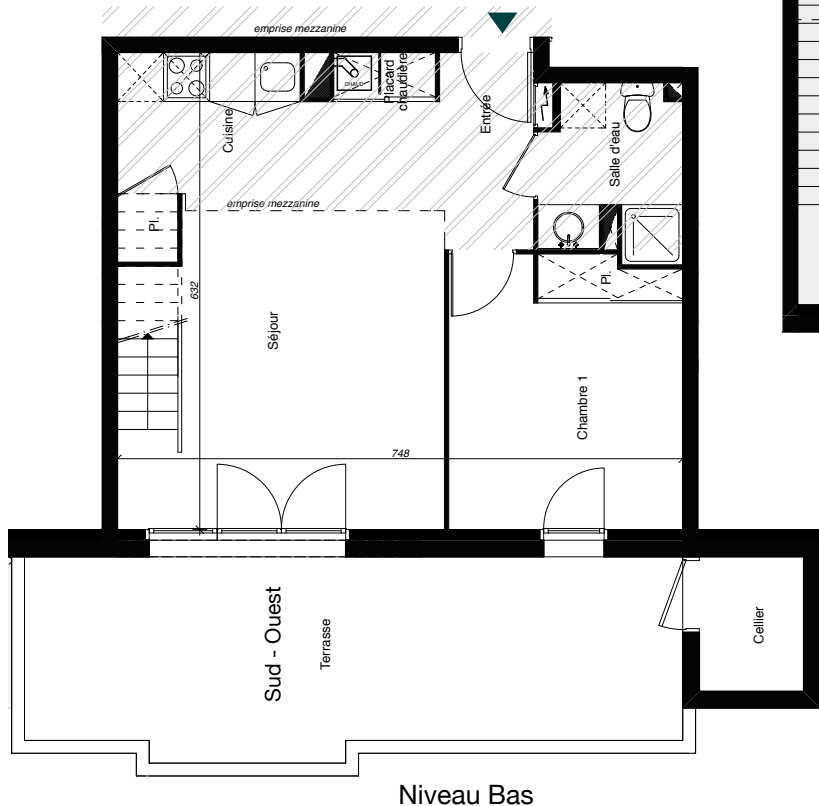
Nos actionnaires :

naxicap  
 PARTENAIRES

FINANCIERE  
**SPL**

BNP PARIBAS  
 DEVELOPPEMENT

Financière SPL au capital de 15 500 000 €



**T 3 duplex - B 104**

Parking Extérieur N° PE 93

BATIMENT B - ETAGE

|                           |                            |
|---------------------------|----------------------------|
| Entrée + Séjour + Cuisine | 26,58 m <sup>2</sup>       |
| Chambre 1 + Placard       | 11,11 m <sup>2</sup>       |
| Salle d'eau               | 3,98 m <sup>2</sup>        |
| Placard                   | 0,50 m <sup>2</sup>        |
| Placard chaudière         | 0,88 m <sup>2</sup>        |
| <b>Niveau Bas</b>         | <b>43,05 m<sup>2</sup></b> |

|                                |                            |
|--------------------------------|----------------------------|
| Bureau / Petit Salon + Placard | 8,82 m <sup>2</sup>        |
| Chambre 2                      | 9,43 m <sup>2</sup>        |
| <b>Niveau Haut</b>             | <b>18,25 m<sup>2</sup></b> |

**TOTALE HABITABLE 61,30 m<sup>2</sup>**

**SURFACES ANNEXES**

|                  |                      |
|------------------|----------------------|
| Surface Cellier  | 2,46 m <sup>2</sup>  |
| Surface Terrasse | 21,95 m <sup>2</sup> |