

Les Jardins d'Opaline

45 rue de Landegrand • 33290 Parempuyre

SEVERINI
PIERRES & LOISIRS
Bâtitseur d'avenir

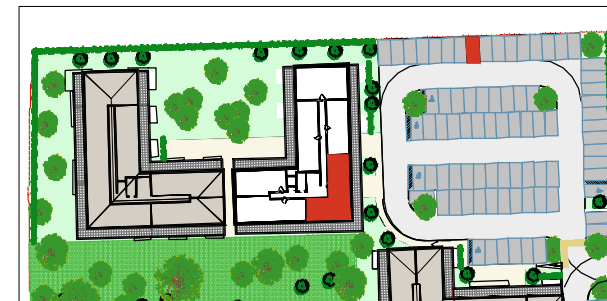
Nos actionnaires :

naxicap

SPL

BNP PARIBAS
DEVELOPPEMENT

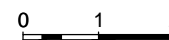
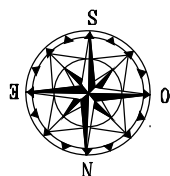
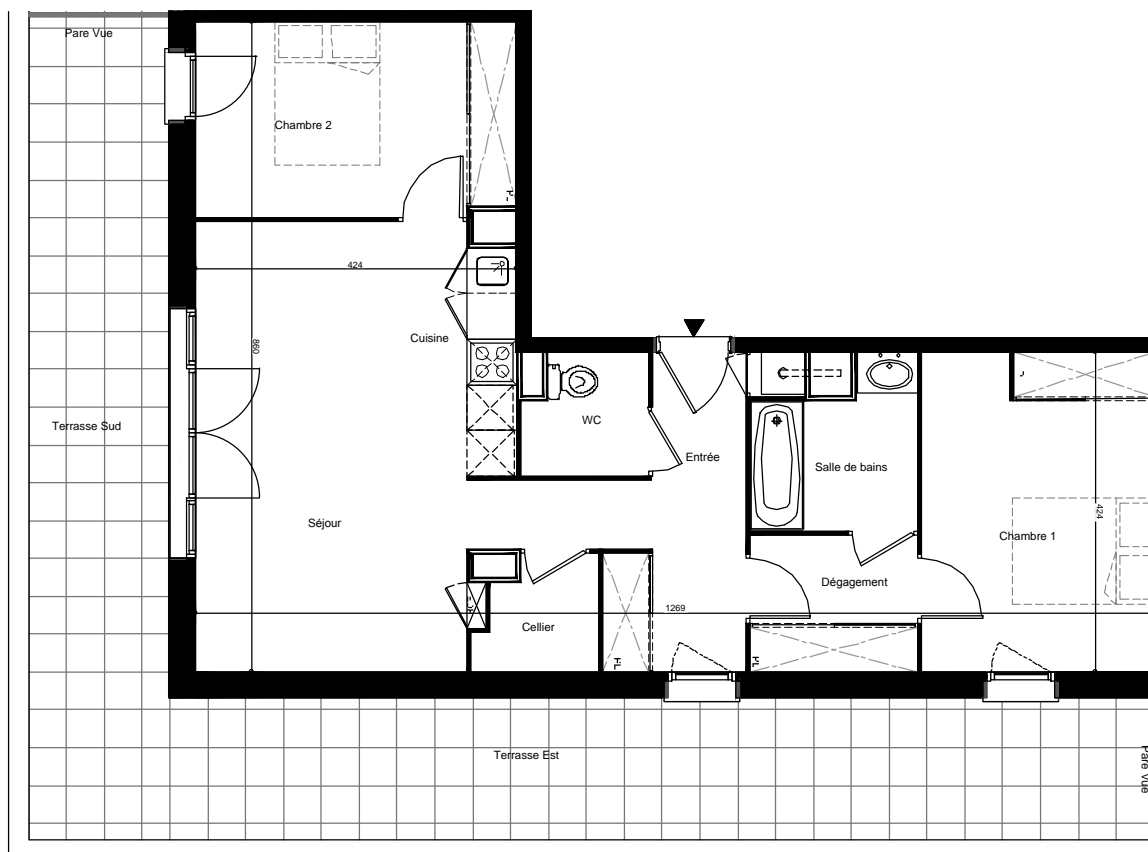
Prévision 2015, au 31/12/2014



T3 - B 204

PARKING PE 08 & 88

BATIMENT B - ATTIQUE



Surfaces Habitables :

ENTREE + PLACARD	6.77 m ²
SEJOUR + CUISINE + CELLIER	27.90 m ²
CHAMBRE 1 + PLACARD	13.10 m ²
CHAMBRE 2 + PLACARD	10.85 m ²
SALLE DE BAINS	4.35 m ²
WC	2.54 m ²
DEGAGEMENT + PLACARD	4.03 m ²

Total Habitable 69.54 m²

TERRASSE 44.78 m²