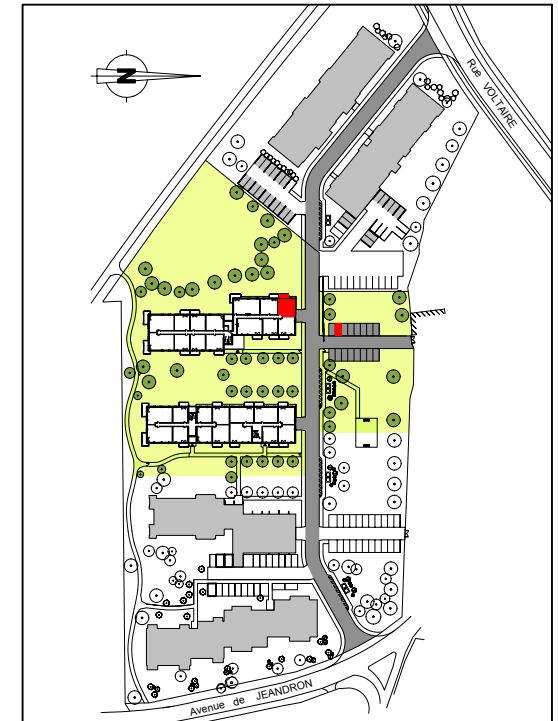
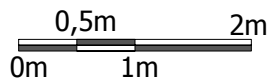
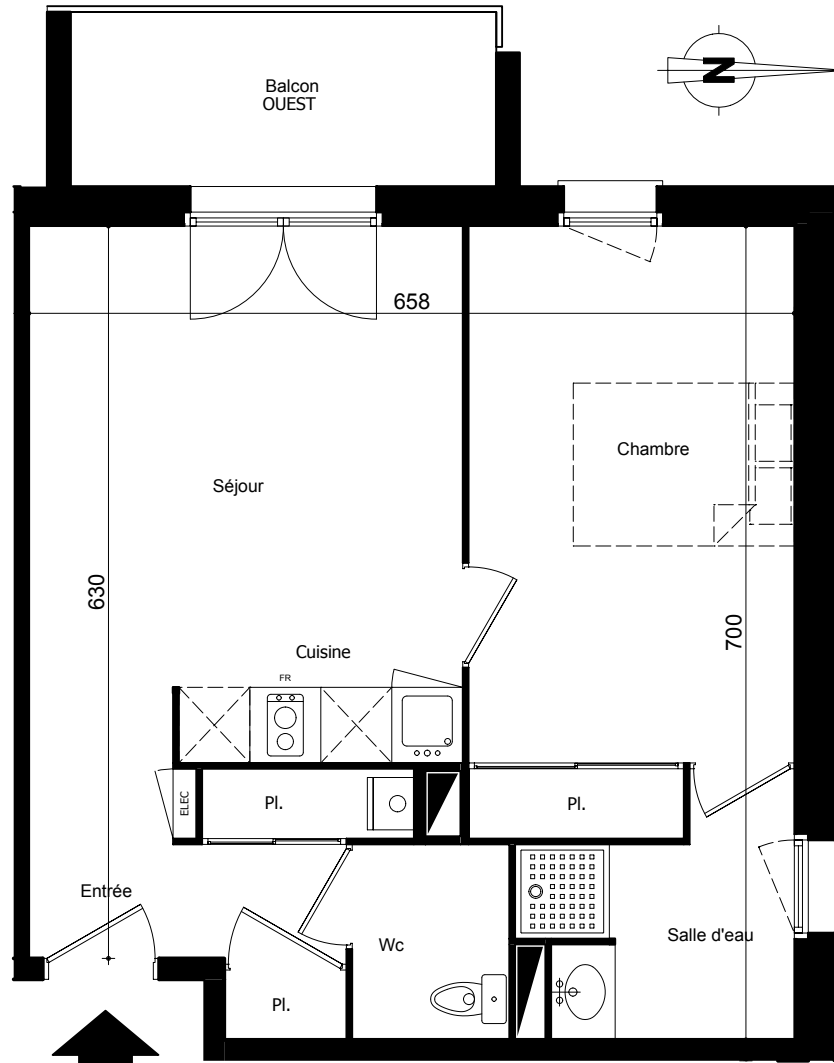


Le parc de L'écrivain

AVENUE JEANDRON - 33160 St MEDARD EN JALLES



T2 - A 112

Parking extérieur n°94

Bâtiment A - Etage 1

Surfaces Habitables :

Séjour+Cuisine+Entrée+Pl	22,60 m ²
Chambre + Placard	14,10 m ²
Salle d'eau	4,30 m ²
Wc	2,25 m ²

Total Habitable 43,25 m²

Balcon 5,50 m²

Surface Fiscale Totale 46,00 m²