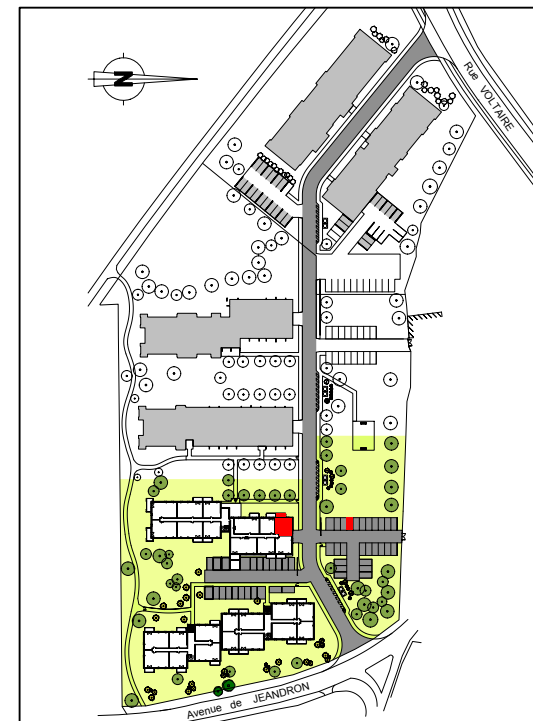
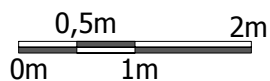
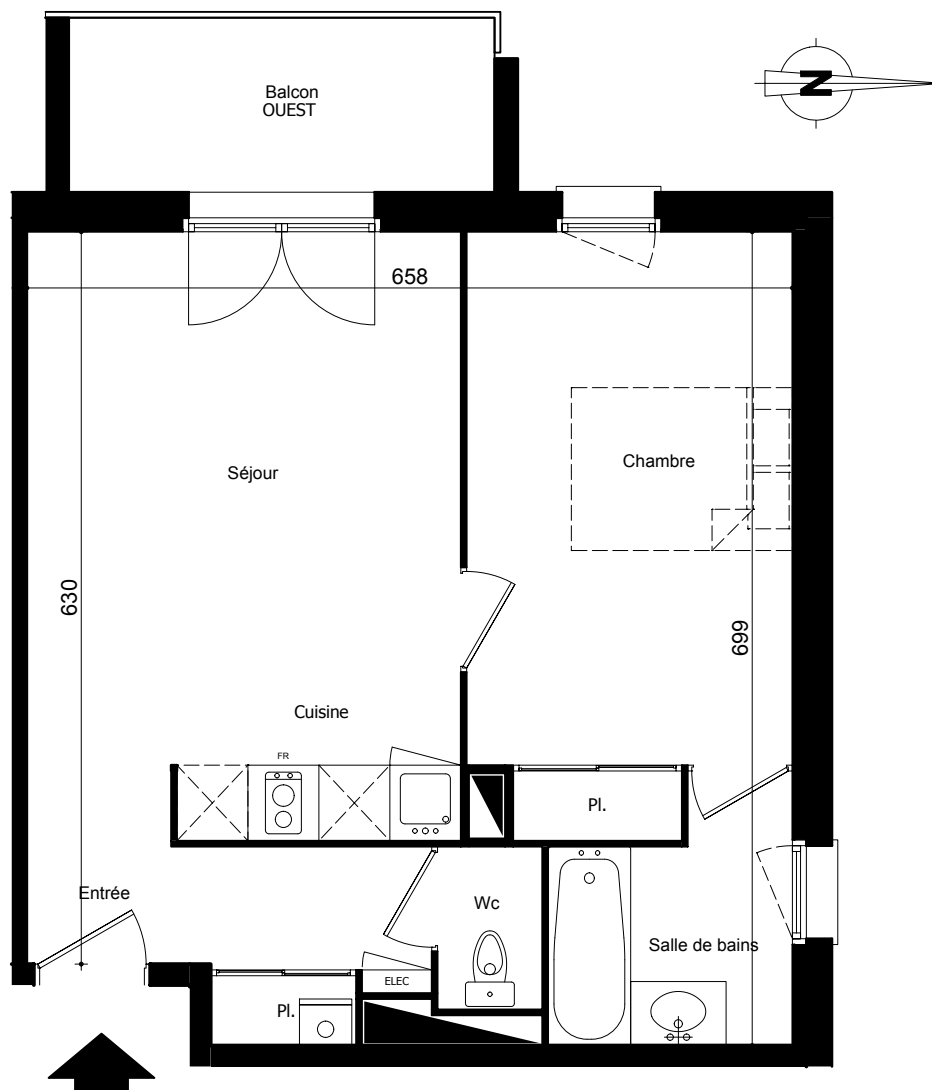


Le parc du Philosophe

AVENUE JEANDRON - 33160 St MEDARD EN JALLES



T2 - D 104

Parking extérieur n°76

Bâtiment D - Etage 1

Surfaces Habitables :

Séjour+Cuisine+Entrée+Pl	23,95 m ²
Chambre + Placard	13,80 m ²
Salle de bains	4,20 m ²
Wc	1,25 m ²

Total Habitable 43,20 m²

Balcon 5,50 m²

Surface Fiscale Totale 45,95 m²