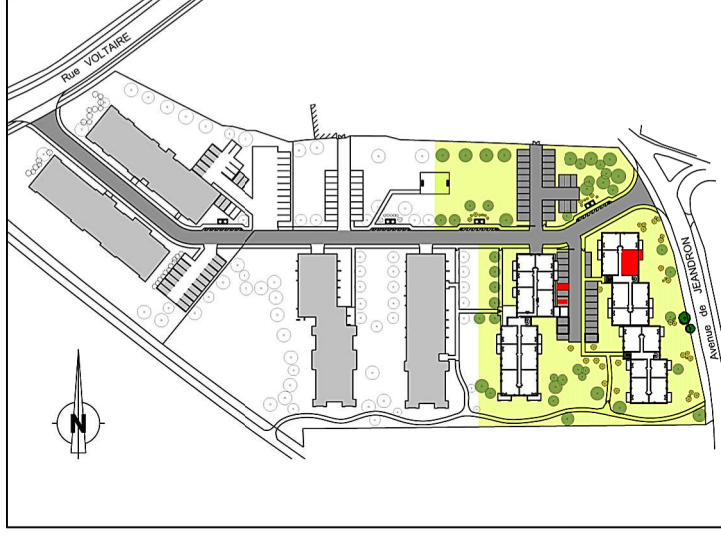
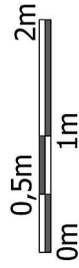
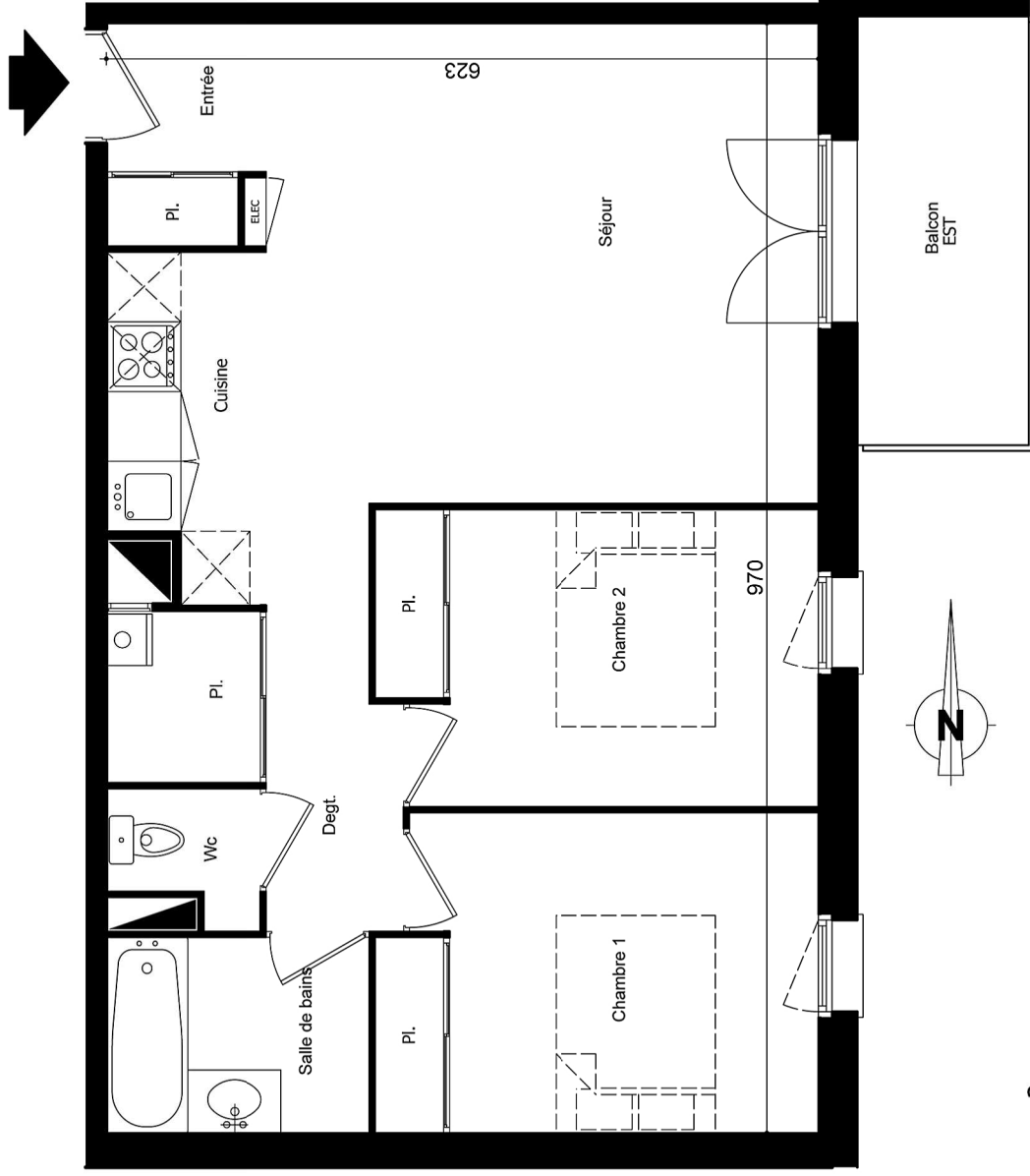


Le parc du Philosophe

AVENUE JEANDRON - 33160 ST MEDARD EN JALLES



T3 - E 101

Parkings Ext. n°101 - Sous Pergola n°103

Bâtiment E - Etage 1

Surfaces Habitables :

| | |
|--------------------------|----------------------|
| Séjour+Cuisine+Entrée+Pl | 27,55 m ² |
| Chambre 1 + Placard | 10,50 m ² |
| Chambre 2 + Placard | 9,80 m ² |
| Degagement + Placard | 5,25 m ² |
| Salle de bains | 3,95 m ² |
| Wc | 1,40 m ² |

Total Habitable 58,45 m²

Balcon 5,60 m²

Surface Fiscale Totale 61,25 m²